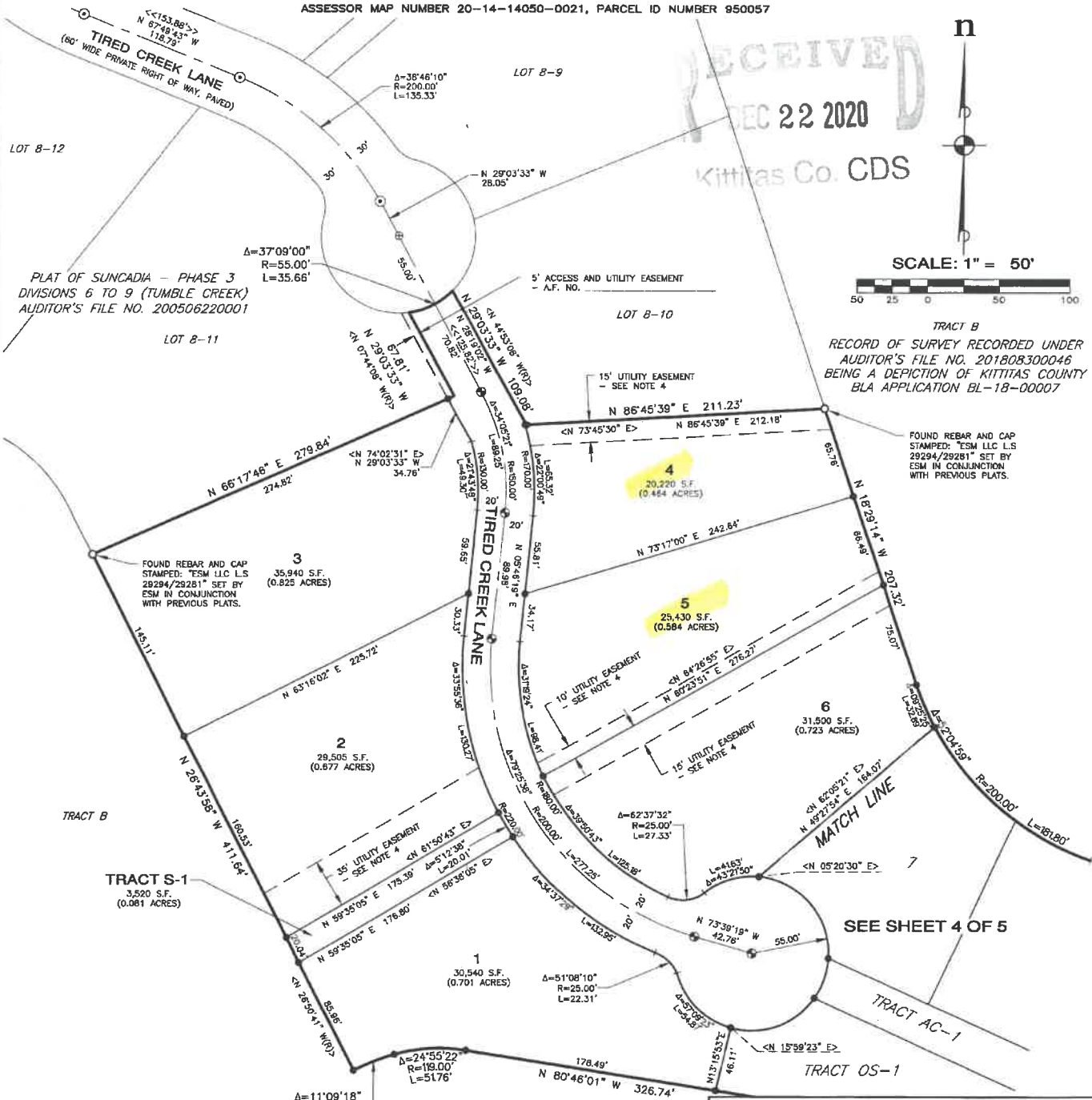


SUNCADIA - PHASE 3 DIVISION 14 (TUMBLE CREEK)

AUDITOR'S REFERENCE

LP-18-00002

A PORTION OF SECTIONS 14 AND 23, TOWNSHIP 20 NORTH, RANGE 14 EAST, W.M.
 KITTITAS COUNTY, WASHINGTON
 ASSESSOR MAP NUMBER 20-14-14050-0021, PARCEL ID NUMBER 950057



RECEIVED
 DEC 22 2020
 Kittitas Co. CDS

TRACT B
 RECORD OF SURVEY RECORDED UNDER
 AUDITOR'S FILE NO. 201808300046
 BEING A DEPICTION OF KITTITAS COUNTY
 BLA APPLICATION BL-18-00007

FOUND REBAR AND CAP
 STAMPED: "ESM LLC L.S.
 29294/29281" SET BY
 ESM IN CONJUNCTION
 WITH PREVIOUS PLATS.

LEGEND

- ⊕ = SET SURFACE BRASS CAP, STAMPED: "L.S. 44925"
- ⊙ = CENTERLINE MONUMENT SET BY ESM IN CONJUNCTION WITH PREVIOUS PLATS
- ⊖ = MONUMENT NOT FOUND
- ⊙ = FOUND CORNER AS NOTED
- = SET 5/8" REBAR WITH CAP STAMPED: "ESM LLC 44825 45782". IN THE EVENT THAT A NON-REMOVABLE OBSTACLE PREVENTS SETTING THE ACTUAL PROPERTY CORNER, A STAMPED 2" ALUMINUM CAP WILL BE SET ON THE PROPERTY LINE AS AN OFFSET TO THE ACTUAL CORNER WITH THE DISTANCE TO THE ACTUAL CORNER NOTED THEREON.
- Δ = DELTA
- R = RADIUS
- L = ARC LENGTH
- (R) = RADIAL BEARING
- <> = RADIAL BEARING AT LOT CORNER
- <<>> = MONUMENT TO MONUMENT DISTANCE

RECORDING CERTIFICATE

FILED FOR RECORD AT THE REQUEST OF KITTITAS COUNTY BOARD OF COMMISSIONERS, THIS 15 DAY OF November A.D. 2018, AT 25 MINUTES PAST 2 O'CLOCK P.M., AND RECORDED IN VOLUME 15 OF PLATS, ON PAGES 10 RECORDS OF KITTITAS COUNTY, WASHINGTON.

BY: Jerald V. Pettit
 DEPUTY COUNTY AUDITOR
 KITTITAS COUNTY AUDITOR

AUDITOR'S REFERENCE: 201811010029



ESM CONSULTING ENGINEERS LLC
 33400 8th Ave. S, #205
 Federal Way, WA 98003
 www.esmcivil.com

FEDERAL WAY (253) 839-1113
 EVERETT (425) 297-9900

Civil Engineering	Land Surveying	Land Planning
Public Works	Project Management	Landscape Architecture
DATE: 2018-10-17	JOB NO. 998-767-017-0100	
DRAWN BY: C.A.F./R.F.G.	SHEET 3 OF 5	